

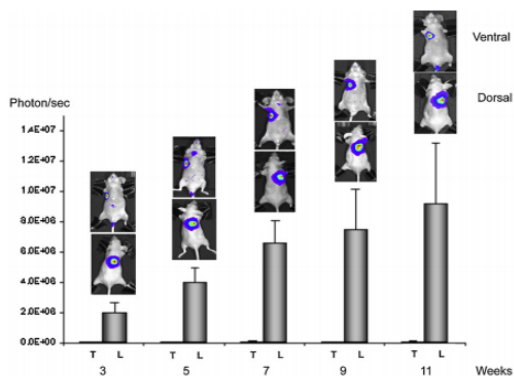


ONCOLOGY / Pulmonary Carcinoma Orthotopic Model

- > Cancer cells: NCI-H460 RedFluc
- > Animals: Balb/c Nude Female
- > Localization: Orthotopic
- > Route of Injection: Surgery (tracheotomy)
- > Volume / Concentration: 2.5×10^5 cells (25 μ l)
- > Follow up on 77 days



Kinetics growth of NCI-H460 RedFluc cell line measured by Bioluminescence



Bioluminescent kinetics

