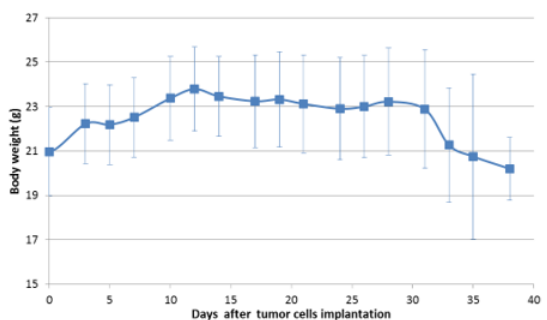


+

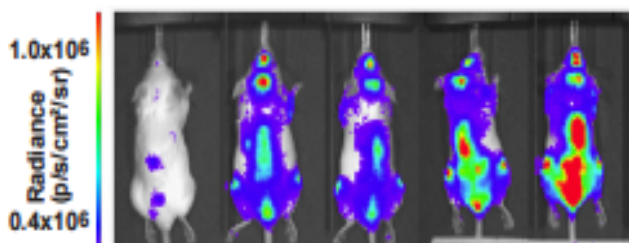
ONCOLOGY / Multiple Myeloma Model

- > Cancer cells: MM1.S / 5THL
- > Animals: NSG
- > Localization: Orthotopic
- > Route of Injection: IV injection
- > Volume / Concentration: 1×10^7 cells/mouse (200 μ L)
- > Follow up on 38 days

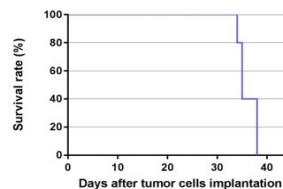
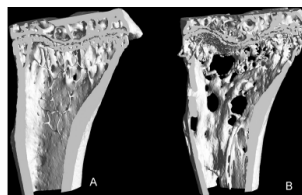
Mean Body Weight Evolution



Bioluminescent kinetics



Survival curve & 3D reconstruction of mice tibia



A : control mice
B : mice injected with $1,5 \cdot 10^6$ cellules 5THL and not treated